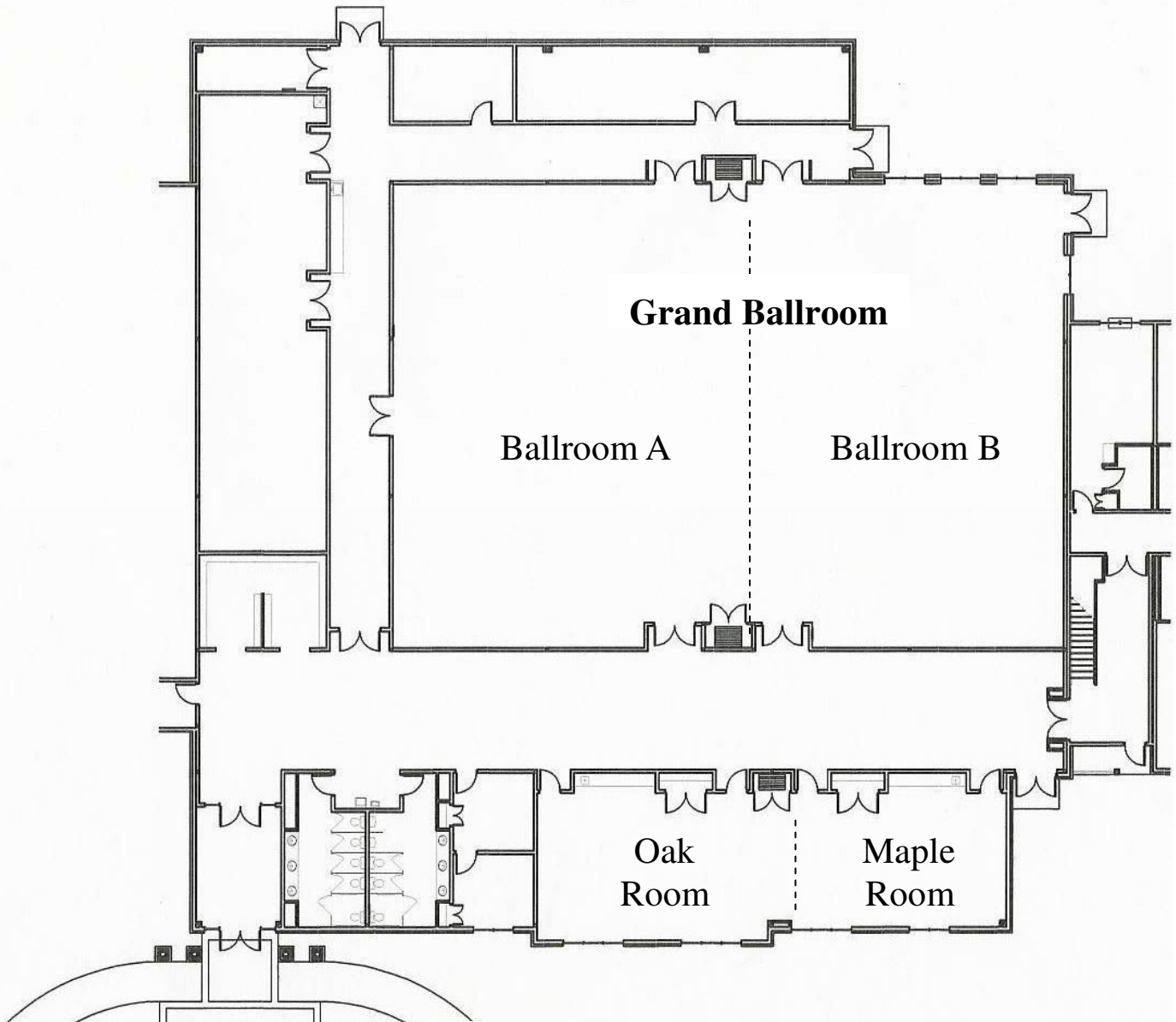




Matt Bramschreiber ~ General Manager
 850 Kepler Drive Suite B
 Green Bay, WI 54311
 920-465-6700 Fax: 920-465-6732



Capacities

Room	Sq. Feet	Classroom	Theater	Rounds	U-Shape	H-Square
Oak	770	40	50	50	25	30
Maple	700	32	40	40	20	26
Oak/Maple	1470	64	100	90	N/A	N/A
Ballroom A	3500	200	350	220	N/A	N/A
Ballroom B	3500	200	350	220	N/A	N/A
Grand Ballroom	7000	380	500	400	N/A	N/A