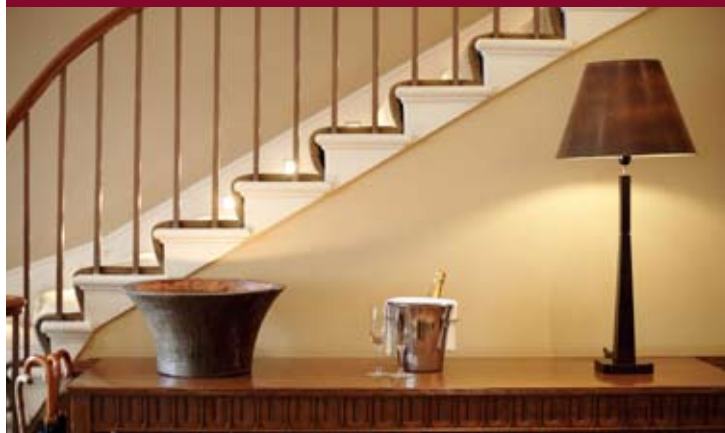




# Park Plaza Sherlock Holmes London



The Park Plaza Sherlock Holmes London comprises two town houses over five floors accommodating 119 beautifully designed bedrooms, and award-winning restaurant, cosy lounge, lively bar, gymnasium with beauty treatment room and seven function rooms for meetings and events.

## Location

- Located on world famous Baker Street, just a few minutes walk to Oxford Street and close to Baker Street underground station, providing easy access to five main London underground lines and four mainline rail stations
- Both Wembley Stadium and the City's financial district are only 10 minutes by train

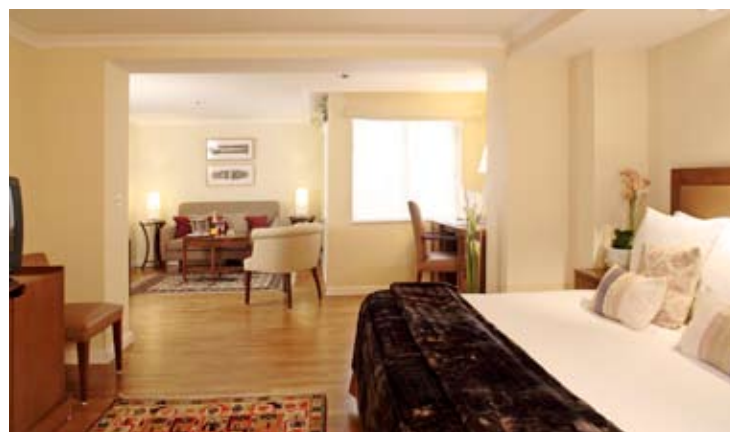


- |                              |                    |                          |
|------------------------------|--------------------|--------------------------|
| 1 PARK PLAZA SHERLOCK HOLMES | 2 OXFORD STREET    | 3 SOHO                   |
| 4 REGENT STREET              | 5 SELFRIDGES       | 6 SHERLOCK HOLMES MUSEUM |
| 7 PLANETARIUM                | 8 MADAME TUSSAUD'S |                          |

- From London Heathrow airport, take the Heathrow Express to Paddington station, which runs every 15 minutes. From Paddington station take London Underground Circle, Bakerloo or Hammersmith & City Line to Baker Street station
- From London Gatwick airport, take the Gatwick Express to Victoria station and from Victoria, take the Victoria line on the underground to Oxford Circus and the Bakerloo line to Baker Street

## Guest Rooms and Facilities

- 119 luxurious, air-conditioned guest rooms including superior and executive rooms, studios and deluxe split-level loft suites



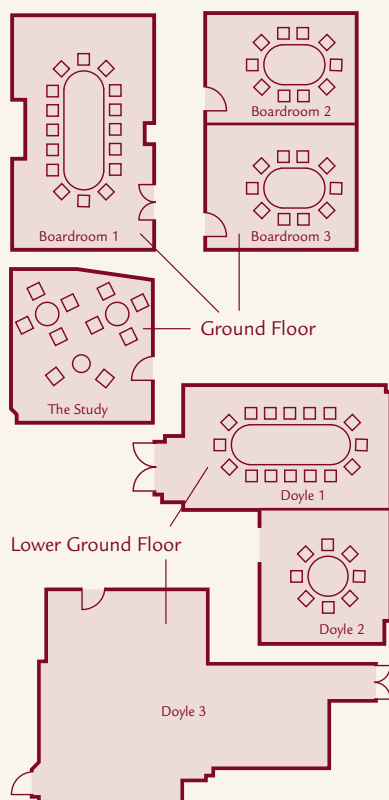
- All rooms feature two telephone lines, voicemail, Wi-Fi high-speed internet access (at a charge), air conditioning, mini-bar, tea & coffee making facilities, hair dryer, laptop safes and UK, EU and US power sockets
- Spacious executive rooms offer an ergonomically designed work area and executive packages include Continental breakfast, 1 hour free internet access, Molton Brown bathroom amenities and a wine, water, confectionary and fruit tray
- All studios boast comfortable lounge areas, some with four-poster beds and cordless DECT telephones that allow call diversion throughout the hotel
- Deluxe loft suites are stunning double-height galleried suites set over two floors, offering luxurious bathrooms on both levels, floor-to-ceiling windows, large king sized bed and CD player
- The secluded Executive Lounge offers an intimate and relaxed atmosphere in which to enjoy a light meal or traditional English afternoon tea and is perfect for private functions
- Full gymnasium, cardiovascular equipment and freeweights for the exclusive use of hotel guests. Sauna, steam room and beauty treatment room are also available.

# Meetings & Events

Name	Dimensions	Total m <sup>2</sup>	Height	Theatre	Boardroom	U-Shape	Classroom	Cabaret	Dinner	Cocktails
Boardroom 1	8.1m x 5.0m	40.5m	2.7m	60	26	24	24	21	48	60 (inc. bar)
Boardroom 2	5.5m x 3.7m	20.3m	2.65m	25	12	10	-	-	12	-
Boardroom 3	5.5m x 4.2m	23.1m	2.65m	25	12	10	-	-	12	-
The Study	5.3m x 5.0m	26.5m	2.25m	32	14	12	10	14	12	-
Doyle 1	4.2m x 7.3m	30.7m	2.32m	42	22	18	24	14	20	-
Doyle 2	4.5m x 4.5m	20.3m	2.32m	16	10	12	10	-	10	-
Doyle 3	7.7m x 6.0m	46.2m	2.43m	87	30	24	36	35	42	100

## Meeting facilities include

Seven flexible meeting rooms with a maximum capacity of 87 theatre-style & 30 boardroom-style. A wide range of the latest state-of-the-art audio-visual computer & technical equipment is available. With an array of menus & fine wines, these rooms are perfect for private dining.



## Restaurants & Bars

### Sherlock's Grill

Open plan concept, features a mesquite wood-burning oven as the main method of cooking alongside the charcoal grill. The modern European menu focuses on high quality seasonal ingredients and organic produce.



### Sherlock's Bar

Light, bright and elegant with a lively atmosphere, Sherlock's Bar serves a wide selection of cocktails and wines, accompanied by an exciting range of pizzas, salads, hot and cold sandwiches as well as antipasti served in tapas portions. Select your dishes to match your appetite! Business breakfast, lunch or afternoon tea may also be enjoyed al fresco whilst you watch the world go by on busy Baker Street.

### Park Plaza Sherlock Holmes London

108 Baker Street  
London W1U 6LJ  
United Kingdom

T: +44 (0) 20 7486 6161  
F: +44 (0) 20 7034 4822  
shh\_me@pphe.com

GDS Chain Code: PK  
www.parkplaza.com