



Nestled amid Germany's oldest city and surrounded by sights from more than 2000 years of history is the contemporary Park Plaza Trier. This beautiful hotel provides stylish accommodation, elegant dining, an impressive wellness facility and function space in a remarkable ancient city once home to the most famous Roman emperors.

Location

- Park Plaza Trier is situated in the heart of the city centre and moments away from the famous Cathedral, Porta Nigra and countless places of interest such as the Rhineland-Palatinate Museum, the Imperial Baths, Roman Amphitheater, renowned vineyards and the beautiful valley of the Mosel river

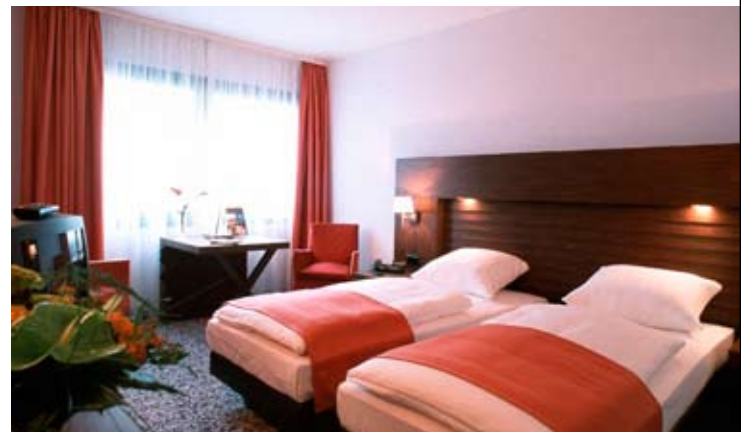


- | | | |
|-----------------------|----------------------------------|--------------------------|
| 1 PARK PLAZA TRIER | 2 FRANKENTURM | 3 HAUPTMARKET |
| 4 TOURIST OFFICE | 5 PORTA NIGRA | 6 DOM & LIEBFRAUENKIRCHE |
| 7 KONSTANTIN BASILIKA | 8 RHEINISCHES LANDESMUSEUM | 9 KAISERTHERMEN |
| 10 THEATER | 11 SHOPPING MALL „TRIER GALERIE“ | PEDESTRIAN ZONE |

- The city of Trier is uniquely located in the heart of Europe and is easily accessible from Luxembourg, France, Belgium and The Netherlands, main train station, Hauptbahnhof Trier is only 10 minutes away from the hotel
- The hotel is within easy reach of Luxembourg airport in only 30 minutes and Frankfurt Hahn in 50 minutes

Guest Rooms and Facilities

- The hotel boasts 142 spacious and cosy guest rooms including superior rooms and eight suites of different sizes, all tastefully decorated with Roman artifacts, equipped with interactive TV, work desk, telephone, mini-bar, high-speed internet connectivity, tea & coffee making facilities and ample storage space, applicable for business and leisure travelers



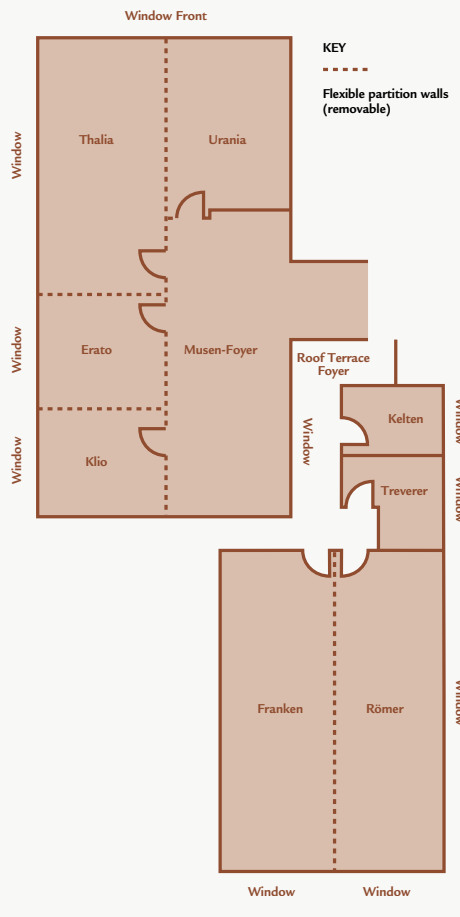
- Guests staying in the suites will find them more spacious, with a relaxing sofa, dining space and our standard benefits package like a complimentary bottle of table water, bathrobe and slippers
- The largest of the suites are split into two rooms and boast private balconies, a big shower and bath tub and an additional restroom
- For the ultimate relaxation the hotel provides a stunning Roman Spa complete with eight indulgent bath areas including steam, sauna and ice grotto as well as massage and beauty treatment rooms
- Onsite public underground car park

Meetings & Events

Name	Dimensions	Height	Theatre	Boardroom	U-Shape	Classroom	Banquet
Wing A							
Kelten	5 x 6m	3m	20	12	-	12	-
Treverer	4 x 9m	3m	24	12	-	16	-
Römer	8.2 x 9.6m	3m	60	28	24	40	30
Franken	8.2 x 9.6m	3m	60	28	24	40	30
Römer & Franken	16.4 x 9.6m	3m	120	48	40	90	80
Wing B							
Klio	7.5 x 7.8m	2.8m	32	20	15	28	-
Erato	7.5 x 7.8m	2.8m	32	20	15	28	-
Urania	11.3 x 7.8m	2.8m	48	28	22	40	35
Thalia	15 x 7.8m	2.8m	80	36	30	68	50
Klio & Erato	15 x 7.8m	2.8m	64	36	30	56	50
Klio, Erato & Thalia	30 x 7.8m	2.8m	168	-	-	136	120
Klio, Erato, Thalia & Urania	30 x 7.8m + 11.3 x 7.8	2.8m	216	-	-	176	180
Erato & Thalia	22.5 x 7.8m	2.8m	128	50	44	104	80
Erato, Thalia & Urania	22.5 x 7.8m + 11.3 x 7.8m	2.8m	160	-	-	136	130
Thalia & Urania	15 x 7.8m + 11.3 x 7.8m	2.8m	128	-	-	108	100

Meeting facilities include

Park Plaza Trier offers state-of-the-art function space, all with natural daylight, Wi-Fi and high-speed internet access and a total capacity of over 200 participants. The hotel's unique rooftop terrace with a splendid view over the slate roofs of Trier is perfect for corporate entertainment, breaks and private events all over the year.



Park Plaza Trier
 Nikolaus-Koch-Platz 1
 54290 Trier
 Germany

T: +49 (0) 651 9993 0
 F: +49 (0) 651 9993 555
 info@parkplaza-trier.de

GDS Chain Code: PK
 www.parkplaza.com/trierde

Restaurants & Bars

Park Plaza Trier's CAESAR'S restaurant provides the finest regional and local cuisine served either inside or on the sunny Mediterranean patio during the summer. Great snacks, excellent wines and local beers can be enjoyed in the Roman mosaic surroundings of the impressive lobby bar and in-room dining is also available from 6:30am until 10pm daily.

