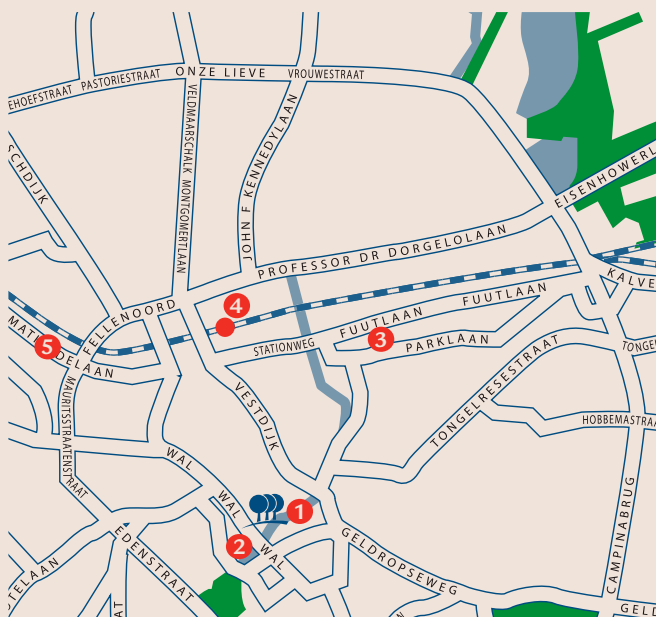




The newly refurbished Park Plaza Mandarin Eindhoven occupies a prime location in the city centre and boasts spacious and modern guest rooms, extensive function space, onsite fitness suite with indoor swimming pool, three well-known Oriental restaurants and the brand new E!lite Lounge.

Location

- The newly refurbished Park Plaza Mandarin Eindhoven is just moments from the heart of the city's attractions and business districts and only 15 minutes from Eindhoven airport. Amsterdam Schiphol Airport is also easily accessible approximately 1 hour 30 minutes by train
- Park Plaza Mandarin Eindhoven is also close to the city's major ring roads with the A2 and A67 highways only 5 minutes from the hotel
- Eindhoven is Holland's fifth largest city and undoubtedly one of the most adventurous with its bustling city centre full of shops, restaurants, bars and pubs and a lively nightlife scene. In contrast Eindhoven has a rich cultural and art heritage with a wealth of events and attractions to explore



- | | |
|--|---|
| 1 PARK PLAZA MANDARIN EINDHOVEN | 3 EFFENAAR MUSIC CENTRE & HEUVEL GALERIJ |
| 2 MODERN ARTS VAN ABBE MUSEUM | 4 CENTRAL STATION |
| | 5 PSV STADIUM |

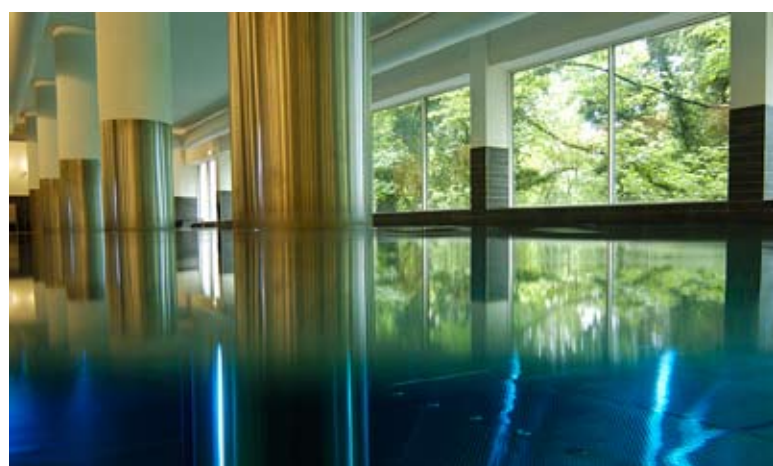
- The hotel is within easy reach of the PSV Eindhoven Stadium for which the city is renowned and only a few minutes walk of Stratums Eind, filled with over 50 bars, cafés and restaurants.

Guest Rooms and Facilities

- The hotel features 102 contemporary and spacious guest rooms, including superior and executive rooms and suites, each featuring a large work desk, telephone, flat-screen TV, ample storage space and Wi-Fi connectivity



- Executive rooms and suites offer plenty of space and added amenities such as a luxury bathrobe and slippers plus complimentary morning newspaper
- To relax and truly unwind, visit the hotel's onsite fitness suite with gym, indoor swimming pool and two Finnish saunas. Alternatively, take some time out to visit the city's famous PSV Eindhoven Stadium or watch some of the equestrian sports for which Eindhoven is renowned



Meetings & Events

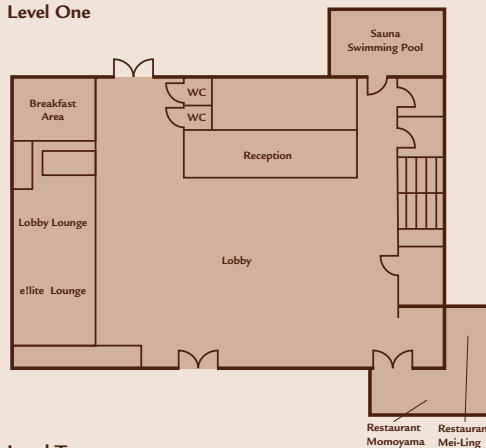
Name	Dimensions	Total m2	Height	Theatre	Boardroom	U-Shape	Classroom	Banquet	Cabaret
Mandarin Park	8 x 7m	56	3	30	20	15	20	-	25
Royal Park	10 x 7m	70	3	40	25	20	30	-	25
Astrid Park	11 x 8m	88	3	65	35	30	40	-	50
Victoria Park	11 x 8m	88	3	65	35	30	40	-	50
Boardroom Suite 1	7 x 3.5m	24.5	2.75	8	-	-	-	-	-
Boardroom Suite 2	7 x 3.5m	24.5	2.75	8	-	-	-	-	-



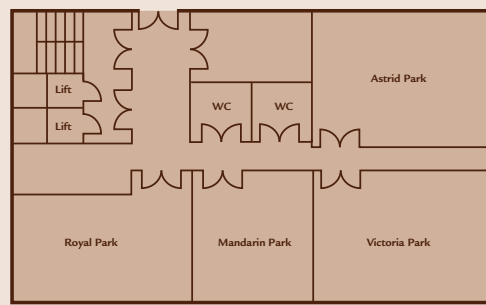
Meeting facilities include

The hotel is well known in the city for its conference space including four flexible function rooms and two boardrooms, each with natural daylight. The new E!Lite Lounge is also an ideal new space for casual meetings. A staffed business centre is available on the conference floor and Wi-Fi connectivity comes as standard throughout the hotel.

Level One



Level Two



Park Plaza Mandarin Eindhoven

Geldropseweg 17
5611 SC Eindhoven
The Netherlands

T: +31 (0) 40 214 6500
F: +31 (0) 40 212 1555
ppmeres@pphe.com

GDS Chain Code: PK
www.parkplaza.com

Restaurants & Bars

Famous for its three Oriental restaurants, the Mei Ling serves authentic Asian cuisine, the Mandarin Garden serves delicate Cantonese and Mandarin fusions and the Momoyama restaurant offers sushi and sukiyaki and Japanese teppanyaki where the chef prepares food at the table – a feast for the eyes! The newly refurbished breakfast restaurant serves an international buffet each morning and the new E!lite lobby lounge serves light snacks and daily specials, making it ideal for informal meetings, drinks and casual dining.

