

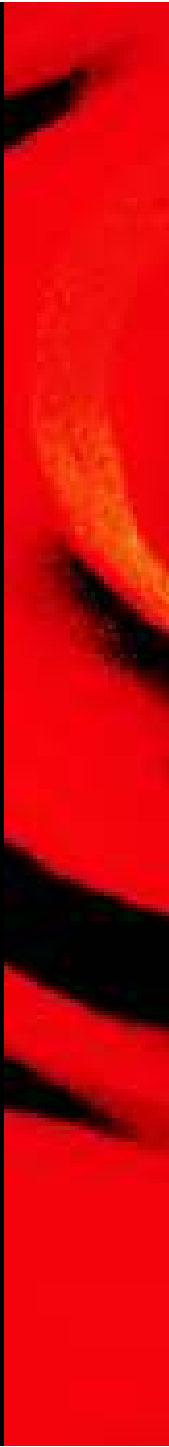
Art Journey at Radisson Hotel Pudong Century Park 上海证大丽笙酒店艺术盛会

Salvador Dali 萨尔瓦多达利

Arman 阿曼

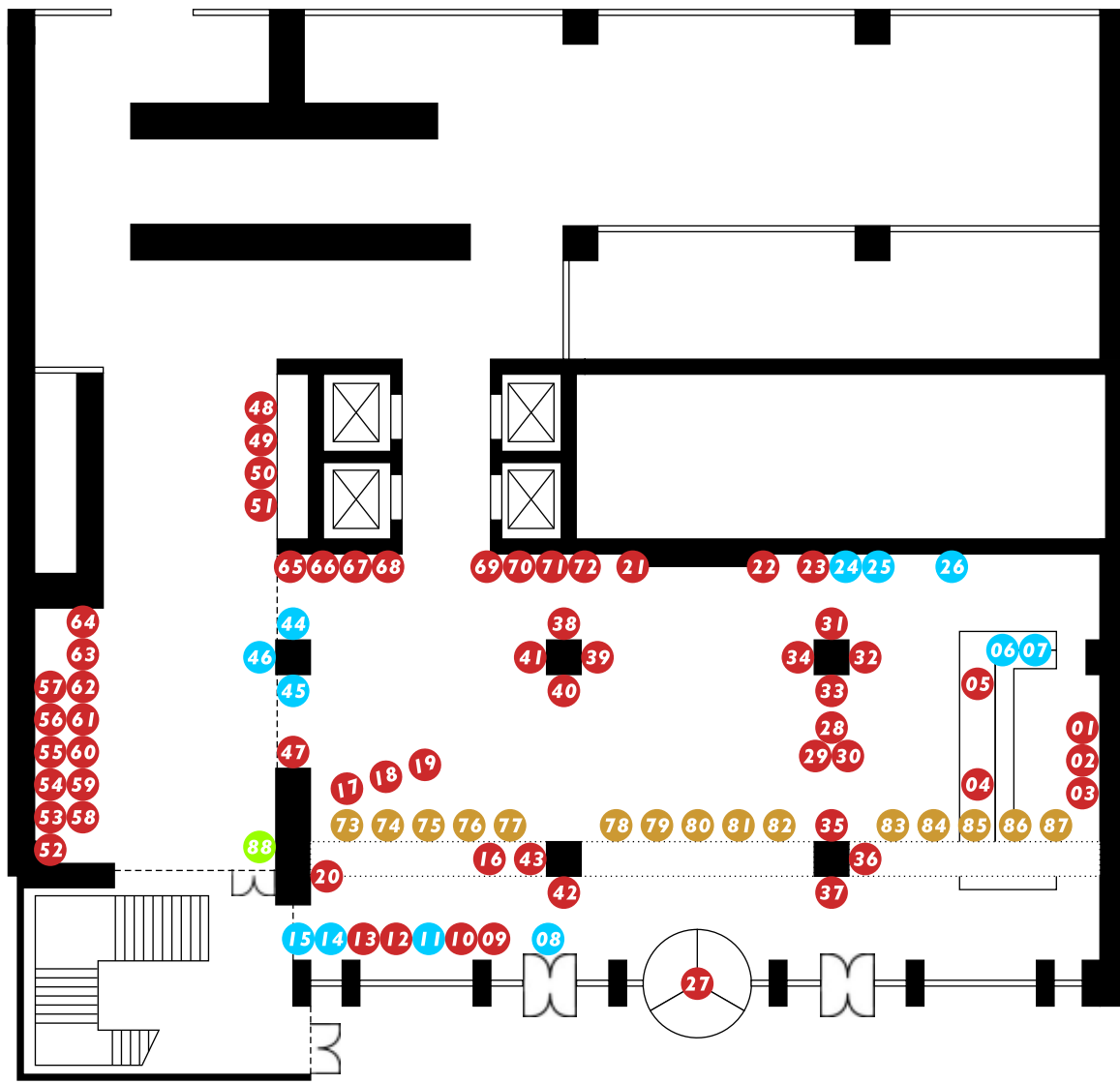
Georges Braque 乔治·布拉克

Walasse Ting 丁雄泉



Artworks
Location
Map

艺术品
导览图



Hotel Lobby
酒店大堂

- **Dali**
达利
- **Arman**
阿曼
- **Georges Braque**
乔治·布拉克
- **Walasse Ting**
丁雄泉





Walasse Ting

Walasse Ting (born 1929) is a New York and Amsterdam-based visual artist. He was born in Shanghai in 1929. He left China in 1946 and lived for a while in Hong Kong, then settling in Paris in 1952. In 1958 Ting arrived in New York at the height of the Abstract Expressionist period. He befriended the American artist, Sam Francis, and the movement had a profound influence on his work. After more than 20 years in New York, Ting moved to Amsterdam, where he has a spacious studio.

Freshness, vitality and brilliant colour characterise Walasse Ting's depictions of women, flowers, birds and animals executed in a powerful and highly individualistic style. His seductive, magical world is one of sensory pleasure, appealing to all those who share his passion for the beauty of the natural world.

丁雄泉

1929年丁雄泉出生于中国无锡。1946年移居香港，1952年远赴巴黎，1960年移民纽约，成为一名流行艺术家。1974年加入美国国籍，常住纽约、巴黎。2001年开始定居荷兰阿姆斯特丹。

享誉国际艺坛的中国画家丁雄泉坦率自然地表露出他的真性情，以艳丽的色彩及大胆的表达方式见称。丁雄泉树立了独立于主流画风之外的特殊风格；他认为不论多么丑陋的女人都有她的美处。“我不停地看女人，在公交车上，在路上，不停地看，然后回家尽情地作画。”自号“采花大盗”、“风流先生”的丁雄泉，率真的道出“女人”是作画的原动力。他爱女人，也擅长画女人。他喜欢用彩笔歌颂女人，把女人的媚、柔、艳、情都画了出来。在画面上，他擅用鹦鹉，花朵，猫儿来衬托女性的娇媚与温柔。



Four Parrots 四只鸚鵡

Walasse Ting 丁雄泉

Color Lithographs 彩色版畫

72cm x 101cm

Selling Price 售價: RMB 185,000

1199 Ying Chun Road, Pudong
Shanghai 200135, China
Tel: +86 21 5130 0000
Fax: +86 21 5130 0333
Email: info.pudong@radisson.com
www.radisson.com/shanghaicn_pudong

中国上海浦东迎春路1199号
邮政编码 200135
电话: +86 21 5130 0000
传真: +86 21 5130 0333
电邮: info.pudong@radisson.com
www.radisson.com/shanghaicn_pudong


HOTEL PUDONG CENTURY PARK
上海证大丽笙酒店