

may fair™

meetings and private dining



For information and bookings for
meetings and private dining

t: +44 (0)20 7915 3898

f: +44 (0)20 7409 7016

mayfcb@radisson.com

For all group and conference enquiries from the USA please call 1 800 483 7871.

radissonedwardian.com

MFPLCB/0106L

Welcome to one of London's premier locations.

A hotel created to match the elegance of its surroundings
where the very name, May Fair, is a byword for the finer things in life.

this place has everything

As you might expect from a hotel opened by King George V, nothing is lacking. Fashions and technology may have advanced since 1927, but the commitment to understated luxury remains as steadfast as ever.

Business facilities are a key part of our service, with 16 stylish spaces for grand conferences and intimate meetings - the largest catering for up to 350 guests.

On the doorstep of this celebrated hotel are the landmarks of a thriving metropolis. A short walk along Piccadilly for example, are the myriad theatres of the West End, superb restaurants and London's club land.

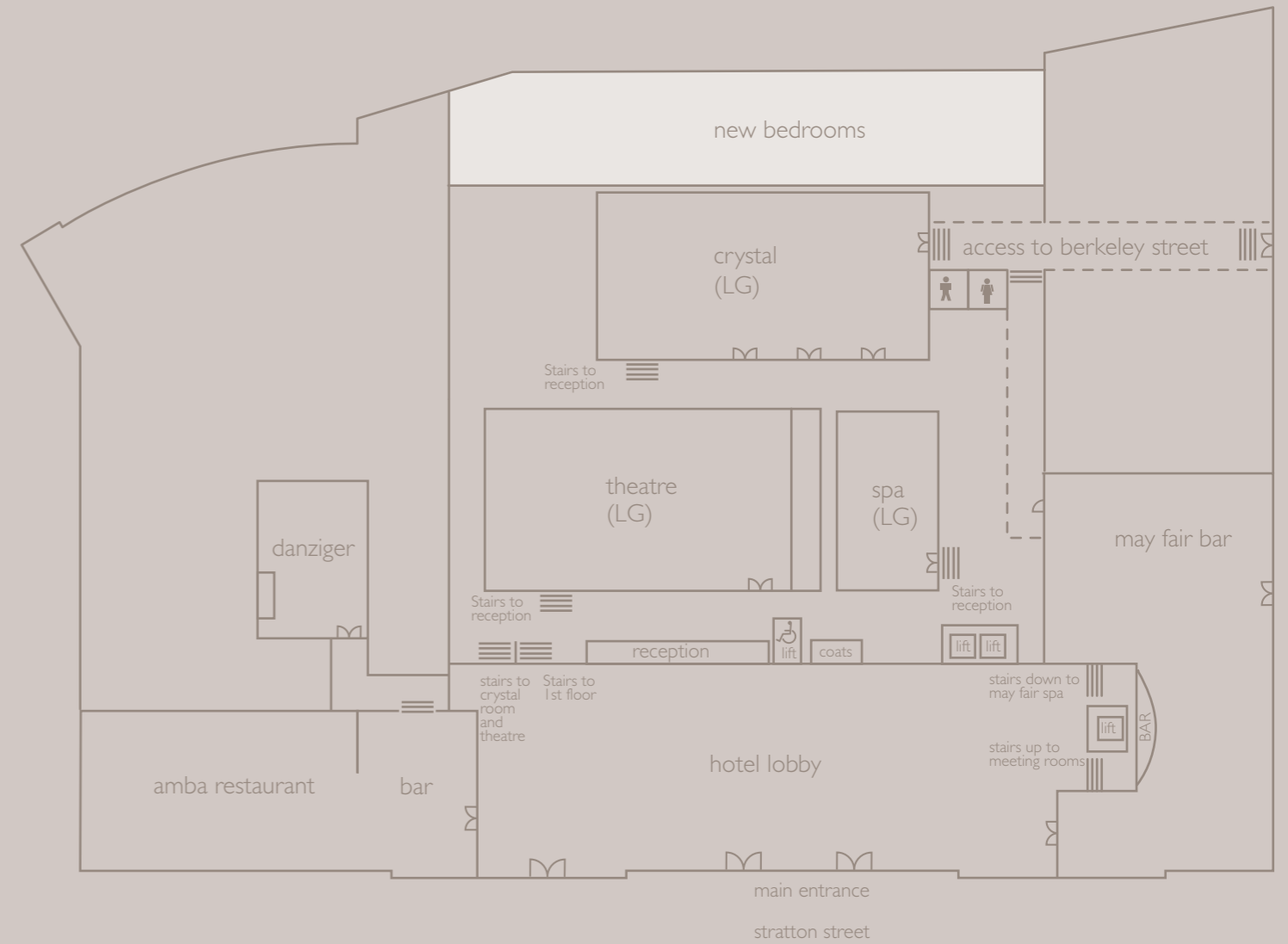
Also close to hand are the great Royal Parks, the Palaces of Westminster and the boutiques of Bond Street.





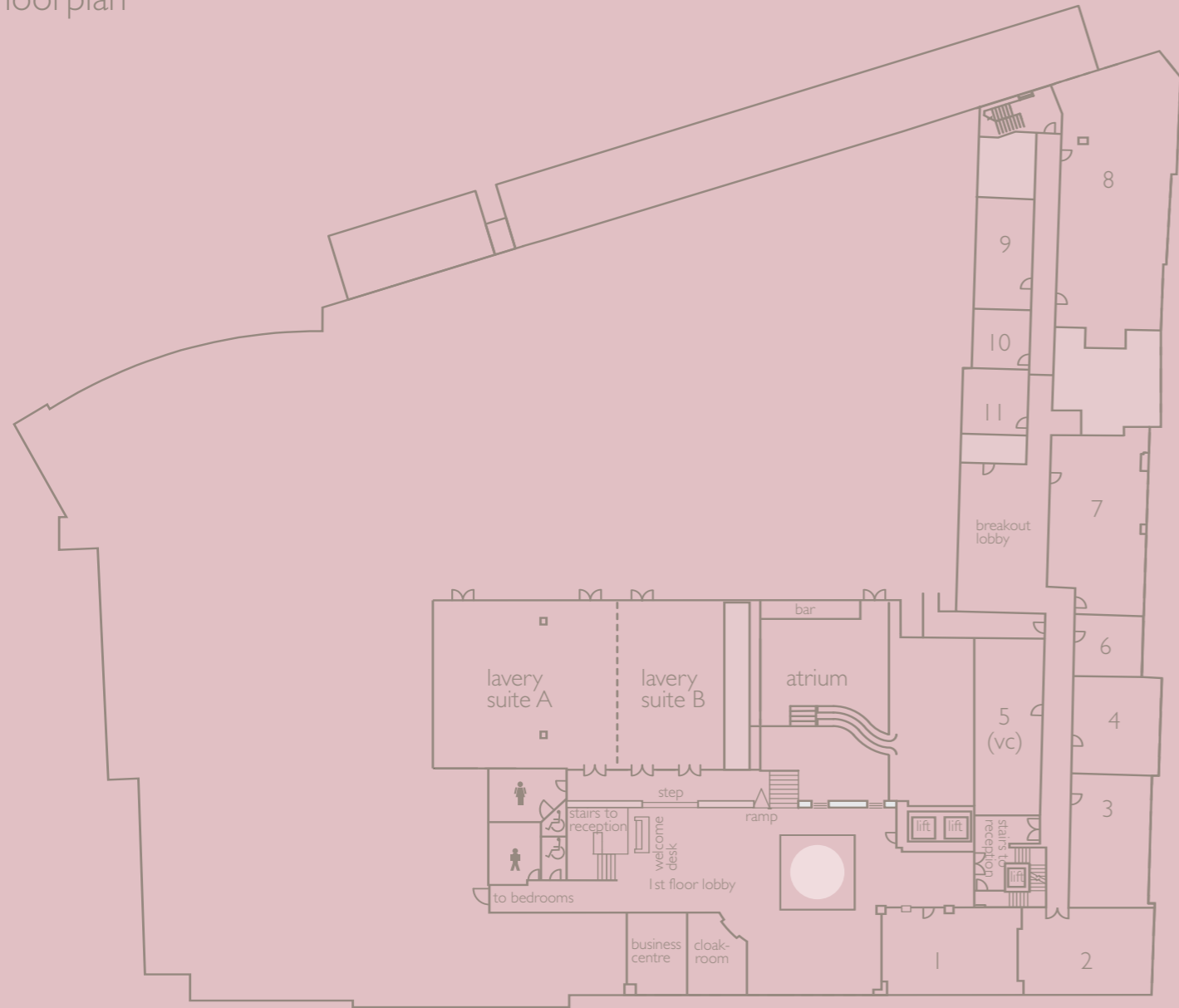
ground floor

Floorplan



first floor

Floorplan



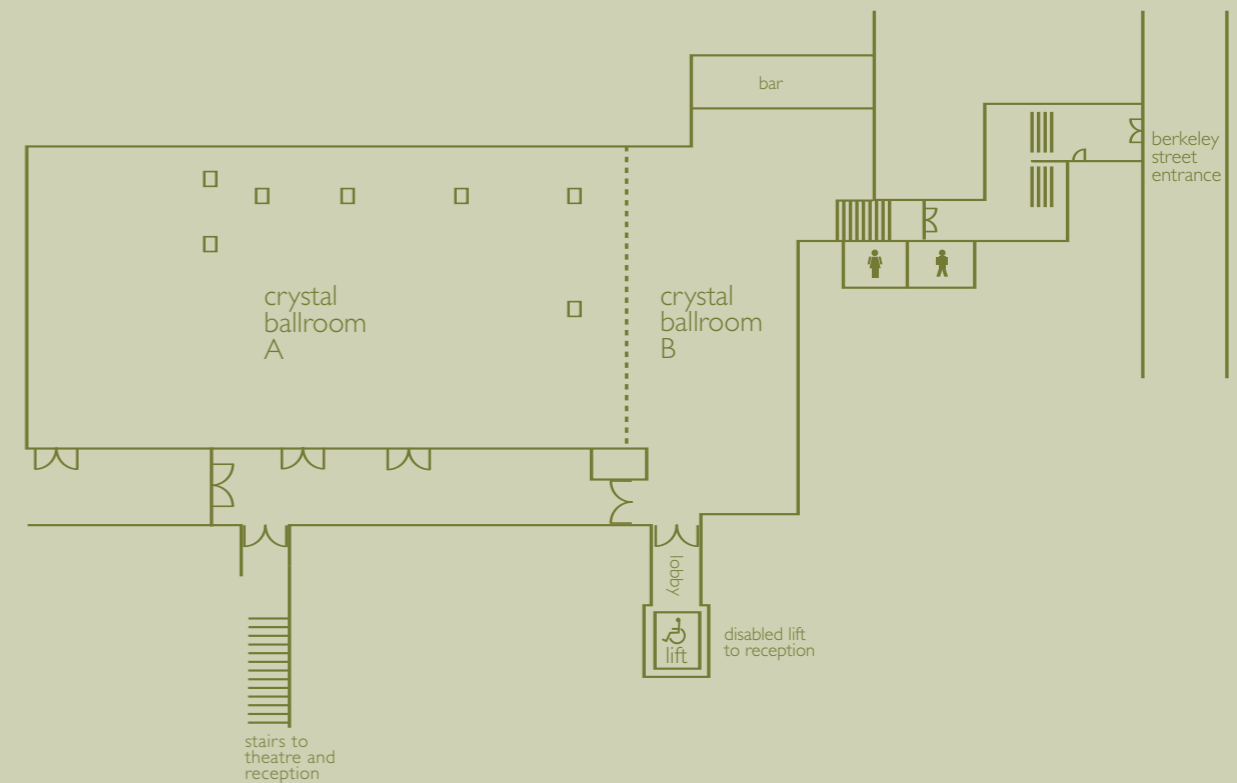


crystal room

When the occasion demands, there's no finer setting than our magnificent ballroom.

A sparkling space of grand proportions with echoes of a glamorous past, the Crystal Room has been redesigned to host the most memorable of events.

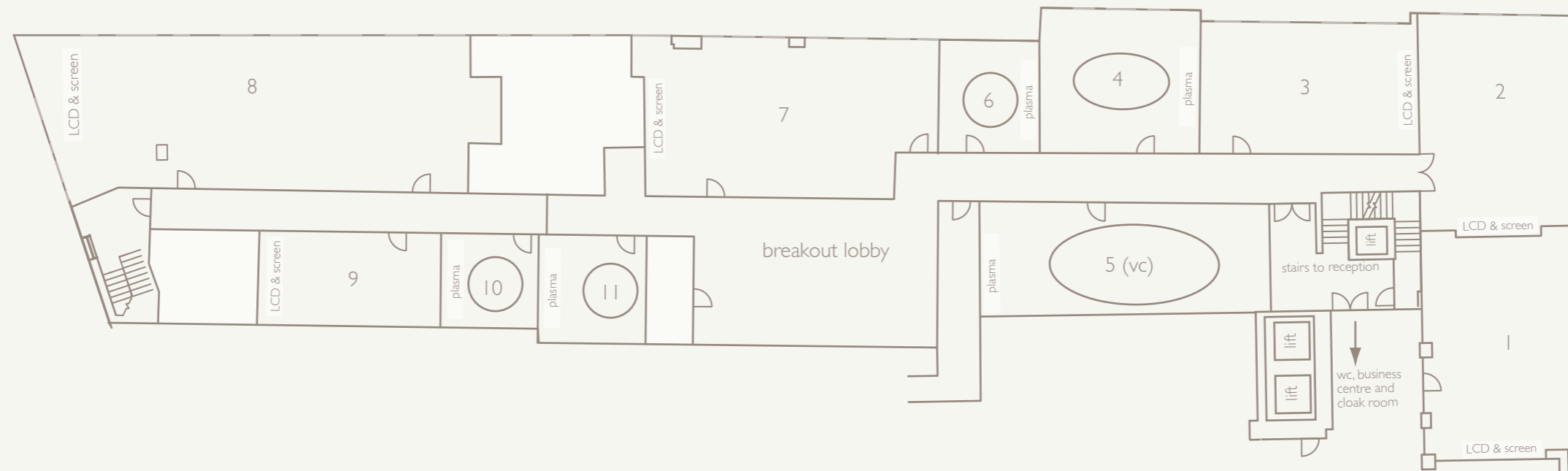
With room for 350 conference guests or 280 for dinner, it also enjoys the exclusivity of a private street entrance.



meetings and private dining

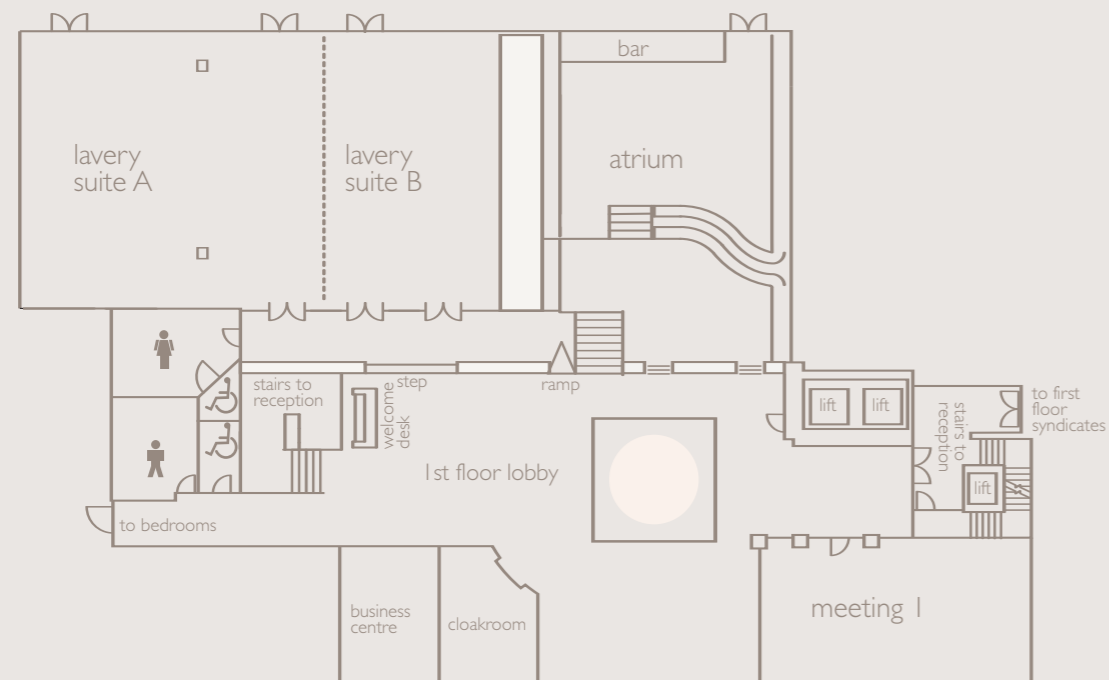
The May Fair's meeting rooms provide more unique advantages; all are on the same floor allowing easy movement from one to another for groups of 6 to 120 people.

There's a state of the art video conferencing suite and, refreshingly, the majority of rooms benefit from natural light.



lavery suite

It's all about space, light and technology. A vaulting glass ceiling tops the adjoining Atrium. This is a brand new space, designed for inspirational thinking. The Lavery suite hosts 300 guests for a conference or 250 for dinner, and is perfect for receptions and exhibitions.



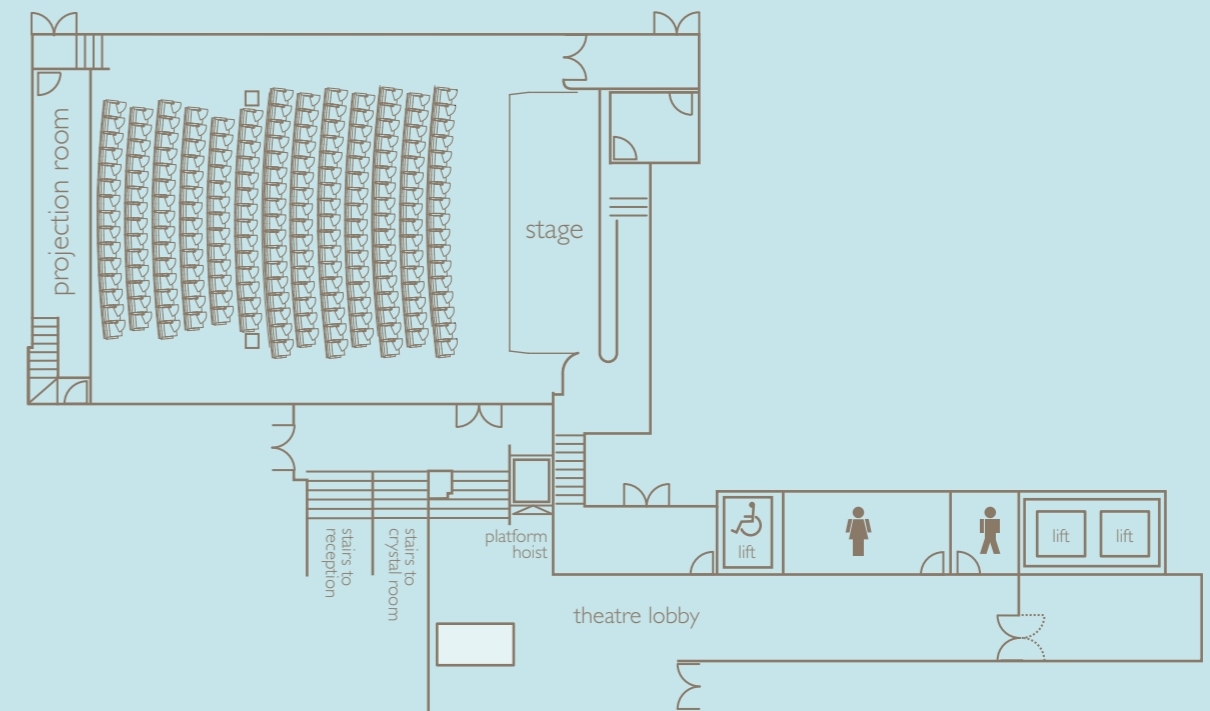


may fair theatre

Our purpose-built theatre is also one of the largest private screening rooms in London. Presentations are brought to life using cutting edge technology from the theatre's control booth.

For film, theatre, AGM or product launches, this space offers seating for 205 people in the exclusive luxury of Italian leather chairs.

- 35mm cinema projection
- DLP digital projection
- Multi-channel translation
- Electronic voting
- State of the art lighting and PA system



Dimensions								
Suite	Length metric (imperial)	Width metric (imperial)	Height metric (imperial)	Day light	Floor	Access	Doors metric (imperial)	Area metric (imperial)
Crystal Room	27.7 (90' 10")	11.5 (37' 8")	3.6 (11' 110")	–	LG2	L / S /St	1.5 (4' 11") × 2.0 (6' 6")	319 (3443' 00")
Crystal Room A	21.5 (70' 6")	11.5 (37' 8")	3.6 (11' 110")	–	LG2	L / S /St	1.5 (4' 11") × 2.0 (6' 6")	247 (2659' 00")
Crystal Room B	5.5 (18' 00")	11.5 (37' 8")	3.6 (11' 110")	–	LG2	L / S /St	1.5 (4' 11") × 2.0 (6' 6")	63 (678' 00")
Lavery Room	19.5 (64' 00")	11.2 (36' 9")	4 (13' 00")	–	I	L / S	1.5 (4' 11") × 2.0 (6' 6")	218 (2346' 00")
Lavery Room A	14 (46' 00")	11.2 (36' 9")	4 (13' 00")	–	I	L / S	1.5 (4' 11") × 2.0 (6' 6")	156 (1679' 00")
Lavery Room B	5 (16' 5")	11.2 (36' 9")	4 (13' 00")	–	I	L / S	1.5 (4' 11") × 2.0 (6' 6")	57 (613' 00")
Atrium	11 (36' 00")	11 (36' 00")	4 (13' 00")	Y	I	L / S	–	121 (1302' 00")
May Fair Theatre	18 (59' 00")	11 (36' 00")	5 (16' 5")	–	LG	L / S	1.5 (4' 11") × 2.0 (6' 6")	198 (2131' 00")
Theatre A (Stage)	6.5 (21' 00")	11 (36' 00")	5 (16' 5")	–	LG	L / S	1.5 (4' 11") × 2.0 (6' 6")	72 (756' 00")
Theatre B (Seating)	11 (36' 00")	11 (36' 00")	5 (16' 5")	–	LG	L / S	1.5 (4' 11") × 2.0 (6' 6")	121 (1296' 00")
Danziger	19.5 (64' 00")	6.5 (21' 4")	2.7 (8' 10")	–	G	G	1.5 (4' 11") × 2.0 (6' 6")	127 (1367' 00")
Meeting 1	9 (29' 6")	6.5 (21' 4")	2.6 (8' 6")	Y	I	L / S	0.75 (2' 5") × 2.0 (6' 6")	59 (635' 00")
Meeting 2	8.5 (27' 00")	6.5 (21' 4")	2.6 (8' 6")	Y	I	L / S	0.75 (2' 5") × 2.0 (6' 6")	55 (592' 00")
Meeting 3	9 (29' 6")	5.5 (18' 00")	2.6 (8' 6")	Y	I	L / S	0.75 (2' 5") × 2.0 (6' 6")	50 (538' 00")
Meeting 4	5.8 (19' 00")	5.8 (19' 00")	2.6 (8' 6")	Y	I	L / S	0.75 (2' 5") × 2.0 (6' 6")	34 (365' 00")
Meeting 5	7.2 (23' 7")	5.5 (18' 00")	2.6 (8' 6")	–	I	L / S	0.75 (2' 5") × 2.0 (6' 6")	40 (430' 00")
Meeting 6	4.2 (13' 9")	4.5 (14' 9")	2.6 (8' 6")	Y	I	L / S	0.75 (2' 5") × 2.0 (6' 6")	19 (204' 00")
Meeting 7	12.2 (40' 00")	6.5 (21' 4")	2.6 (8' 6")	Y	I	L / S	0.75 (2' 5") × 2.0 (6' 6")	79 (850' 00")
Meeting 8	20 (65' 7")	6.5 (21' 4")	2.6 (8' 6")	Y	I	L / S	0.75 (2' 5") × 2.0 (6' 6")	130 (1399' 00")
Meeting 9	6 (19' 8")	4.2 (13' 9")	2.6 (8' 6")	–	I	L / S	0.75 (2' 5") × 2.0 (6' 6")	25 (269' 00")
Meeting 10	4.2 (13' 9")	3.7 (12' 2")	2.6 (8' 6")	–	I	L / S	0.75 (2' 5") × 2.0 (6' 6")	16 (172' 00")
Meeting 11	3.1 (10' 2")	4.2 (13' 9")	2.6 (8' 6")	–	I	L / S	0.75 (2' 5") × 2.0 (6' 6")	13 (140' 00")

key:
measurements in brackets are imperial sizes,
access codes are G = ground L = lift S = stairs St = street

Capacities								
Suite	Theatre	Classroom	Boardroom	U-shape	Cabaret	Reception	Lunch/dinner	Dinner dance
Crystal Room	350	150	70	60	180	350	280	240
Crystal Room A	300	120	60	50	140	300	200	–
Crystal Room B	60	30	20	20	25	60	40	–
Lavery Room	300	150	60	60	140	300	250	200
Lavery Room A	180	90	40	40	90	200	150	–
Lavery Room B	70	36	25	25	30	80	40	–
Atrium	–	–	–	–	–	300	–	–
May Fair Theatre	205	205	–	–	–	–	–	–
Danziger	100	50	40	36	55	120	80	70
Meeting 1	–	–	20	–	–	–	20	–
Meeting 2	40	20	18	16	20	40	20	–
Meeting 3	50	30	20	20	25	50	40	–
Meeting 4	–	–	12	–	–	–	12	–
Meeting 5	–	–	16	–	–	–	16	–
Meeting 6	–	–	8	–	–	–	8	–
Meeting 7	70	36	24	24	40	70	60	–
Meeting 8	100	50	40	36	55	120	90	80
Meeting 9	30	12	12	12	–	–	12	–
Meeting 10	–	–	8	–	–	–	8	–
Meeting 11	–	–	8	–	–	–	8	–



when it's time to rest

Luxuriate or rejuvenate in the May Fair Bar or May Fair Spa. Time out here is all about the mood that takes you. And at the end of the day, the freedom to relax in your own space.

Bedrooms

- 406 luxurious bedrooms
- Average size >35m²
- Full in-room entertainment systems

Garden rooms

- External hot tubs
- Outside TV
- Ornamental garden

Signature suites

- Home cinema
- Separate lounges
- Each individually designed

map



may fair ★★★★★

Stratton Street,
London W1A 2AN
t: +44 (0)20 7629 7777
f: +44 (0)20 7629 1459
resmayf@radisson.com

meetings and private dining

t: +44 (0)20 7915 3898
f: +44 (0)20 7409 7016
mayfcb@radisson.com